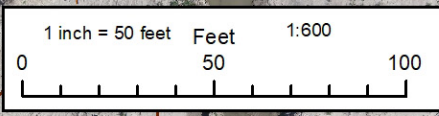


| Id | Length_m | Length_ft |
|---------|----------|-----------|
| 1 | 77 | 252 |
| 2 | 74 | 242 |
| 3 | 65 | 213 |
| 4 | 164 | 538 |
| Totals: | 379 | 1245 |



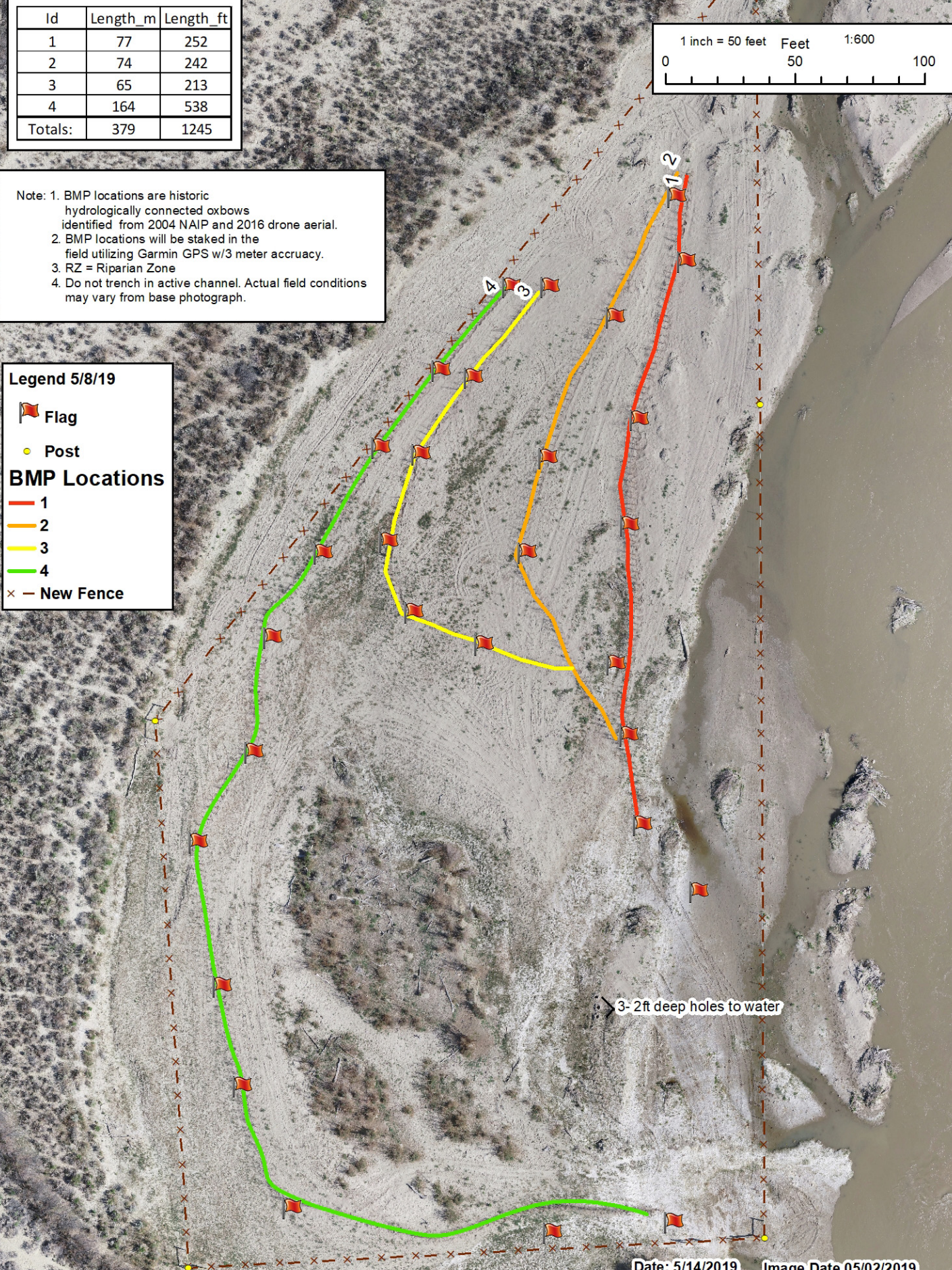
Note: 1. BMP locations are historic hydrologically connected oxbows identified from 2004 NAIP and 2016 drone aerial.
 2. BMP locations will be staked in the field utilizing Garmin GPS w/3 meter accuracy.
 3. RZ = Riparian Zone
 4. Do not trench in active channel. Actual field conditions may vary from base photograph.

Legend 5/8/19

- Flag
- Post

BMP Locations

- 1
- 2
- 3
- 4
- New Fence



3- 2ft deep holes to water